



**SG-811, SG-811/F, SG-811E
SG-811E/F, SG-813
Panini/Sandwich Grills**

This manual contains important information regarding your *Admiral Craft* unit. Please read this manual thoroughly prior to equipment set-up, operation and maintenance. Failure to comply with regular maintenance guidelines outlined in this manual may void the warranty. MUST READ!!!

Instructions For First Time Use of Grills:

In order to protect the plates of your new grill during transportation, a layer of food-safe bee's wax was coated on the surface prior to shipment. This wax is harmless, but must be removed before initial use. To remove, preheat the grill until the wax liquifies. Next, carefully wipe away the melted wax with a clean soft cloth. Once all of the wax is removed, you can begin to use your grill.

PLEASE NOTE: For your convenience, the handle on this sandwich / panini grill is fully adjustable for your desired tension. To adjust the tension, open the rear cover (see Figure A) with a screwdriver to expose the hex-screws. Using an allen wrench to adjust the screws, (see Figure B) either loosen the handle by adjusting counter-clockwise, or tighten by adjusting clockwise, as this will insure easy and comfortable use of your grill. If you hear any sound when you lift or lower the handle, lubricate the center hole of copper base (see Figure C) with lubricating oil.



Figure A



Figure B



Figure C

WARNINGS

- Do not touch any hot surfaces
- Do not immerse unit, cord or plug in liquid at any time
- Unplug cord from outlet when not in use and before cleaning
- Plug only into a 3-hole grounded electrical outlet
- Do not operate unattended
- Do not use this unit for anything other than intended use
- Do not use outdoors
- Keep children and animals away from unit
- Always cook on a firm, dry and level surface at least 12" from walls or any other obstruction
- Do not use unit with a damaged cord or plug, in the event the appliance malfunctions, or has been damaged in any manner
- Any incorrect installation, alterations, adjustments and/or improper maintenance can lead to property loss and injury. All repairs should be done by authorized professionals only
- Ensure that the power supply you are using is adequate for continual grill usage and the voltage is correct.
- Do not jam materials or place heavy objects on grill, as this may cause damage.

In order to protect the plates of your new grill during transportation, a layer of food-safe wax was coated on the surface prior to shipment. This wax is harmless, but must be removed before you begin to use. To remove, preheat the grill until the wax liquefies. Next, carefully wipe away the melted wax with a clean, soft cloth. Once all of the wax is removed you can begin to use your grill.

TO USE

1. Plug the power cord into the appropriately rated outlet.
2. The power light will illuminate.
3. Once desired temperature is set, the Heating Indicator will come on. Warm-up time is approximately 7-8 minutes. The Heating indicator will cycle at set temperature.
4. For normal use, it is recommended that the temperature range be 392°F-482°F.
5. When the surface reaches the designated temperature, lift top grill using black handle and lightly grease grill plates with vegetable oil. Place food on grill and lightly press handle down. Excess oil will collect in the oil collection tray. Remove food when cooked. The heaters will automatically cycle as needed.

CLEANING – NOTE: To maintain cleanliness and increase service life, the grills should be cleaned daily. Do not immerse the grill in water or any other liquid.

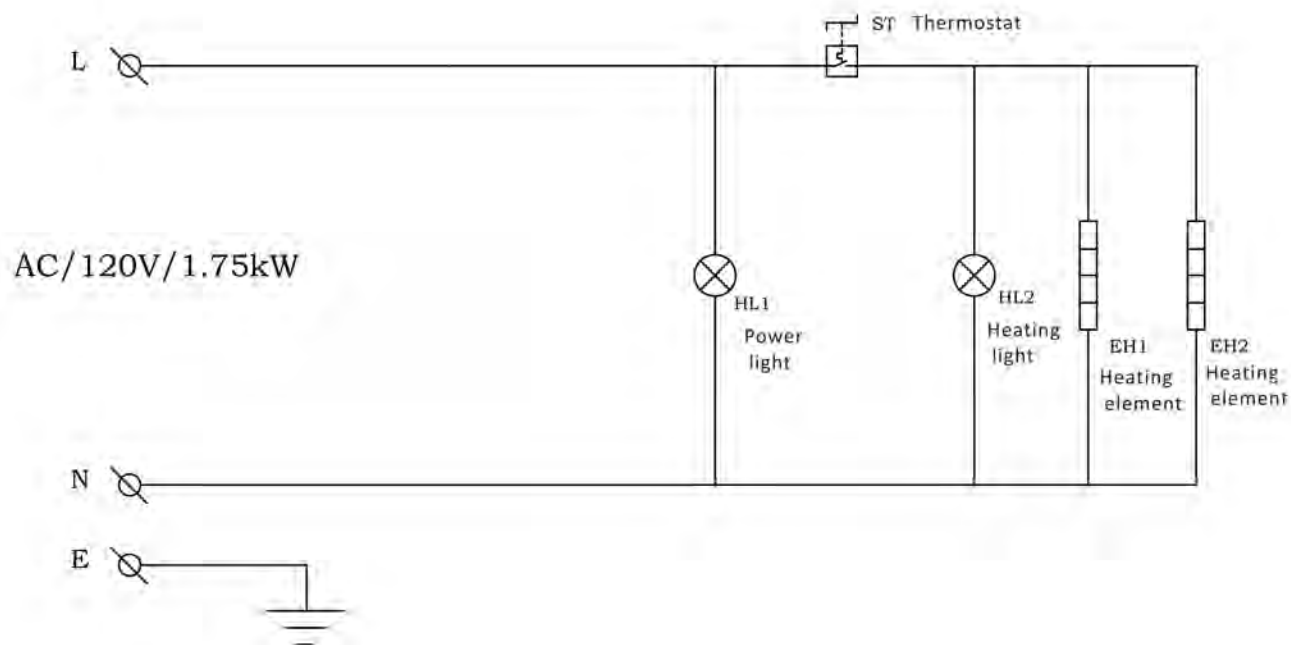
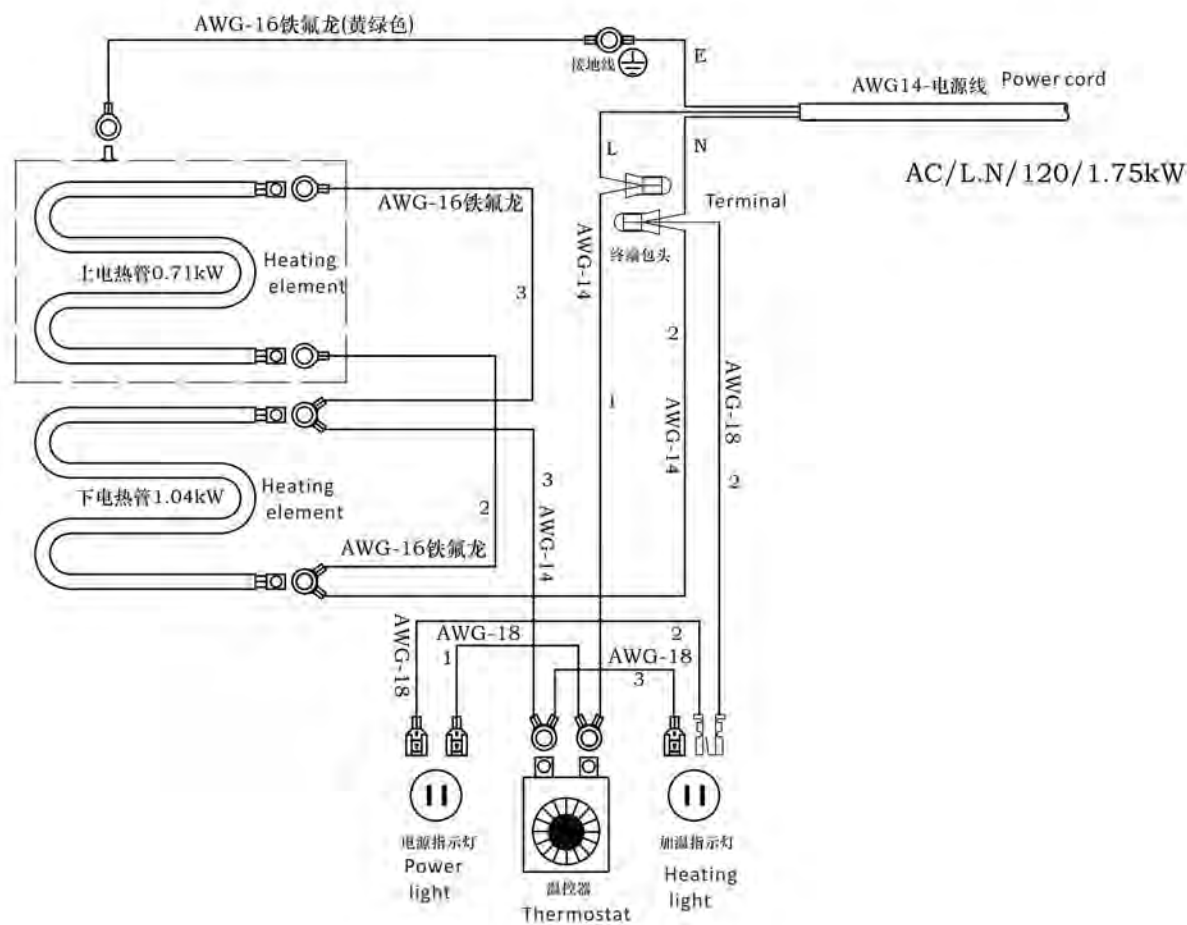
1. Before cleaning or attempting to move grill, unplug and let the unit cool completely.
2. Wipe the entire unit with a clean soft cloth until it is completely dry.
3. To avoid damage, do not use abrasive cleaners or scouring pads.
4. If soap or chemical cleaners are used, be sure they are completely rinsed away with clear water immediately after cleaning. Chemical residue could damage or corrode the surfaces of the unit.
5. Store in a dry clean area when not in use.

TROUBLESHOOTING

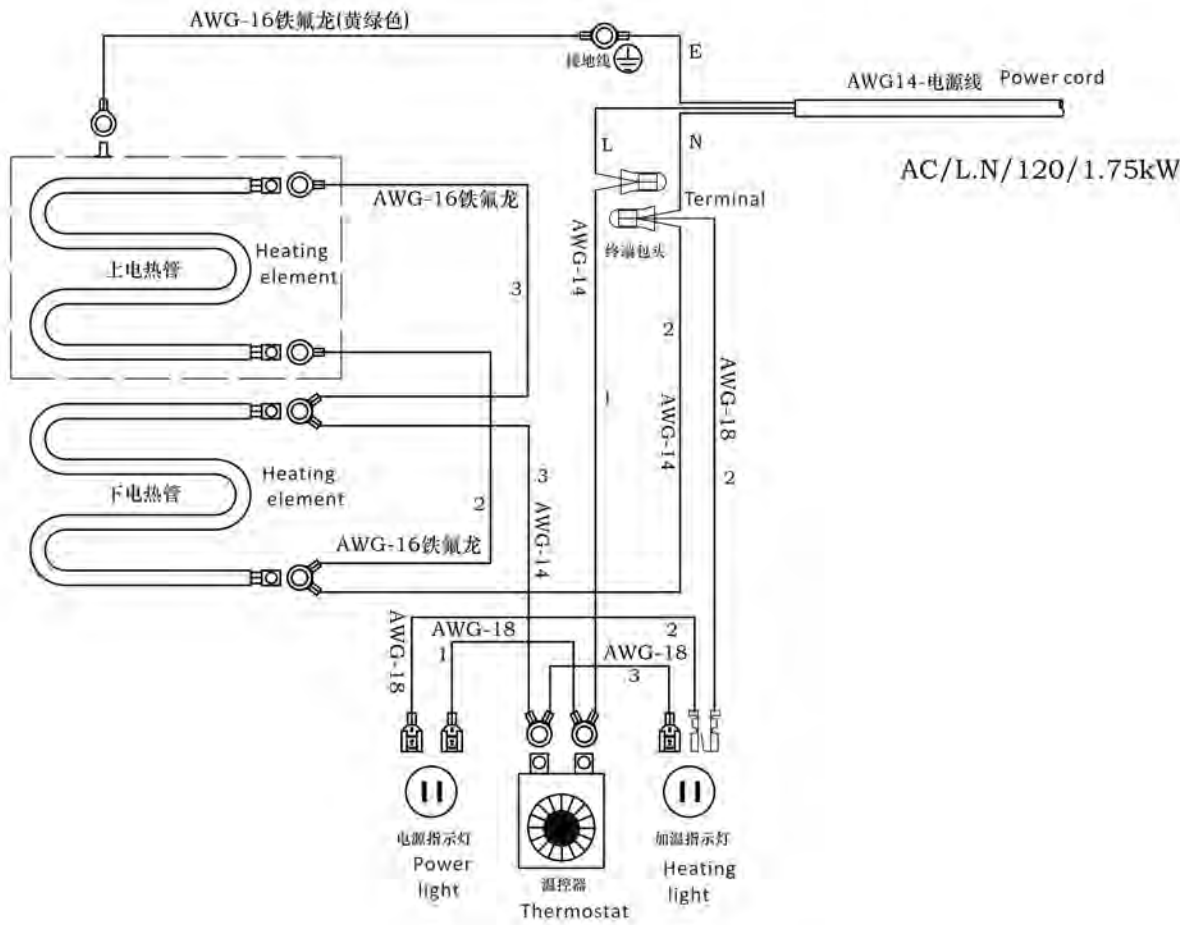
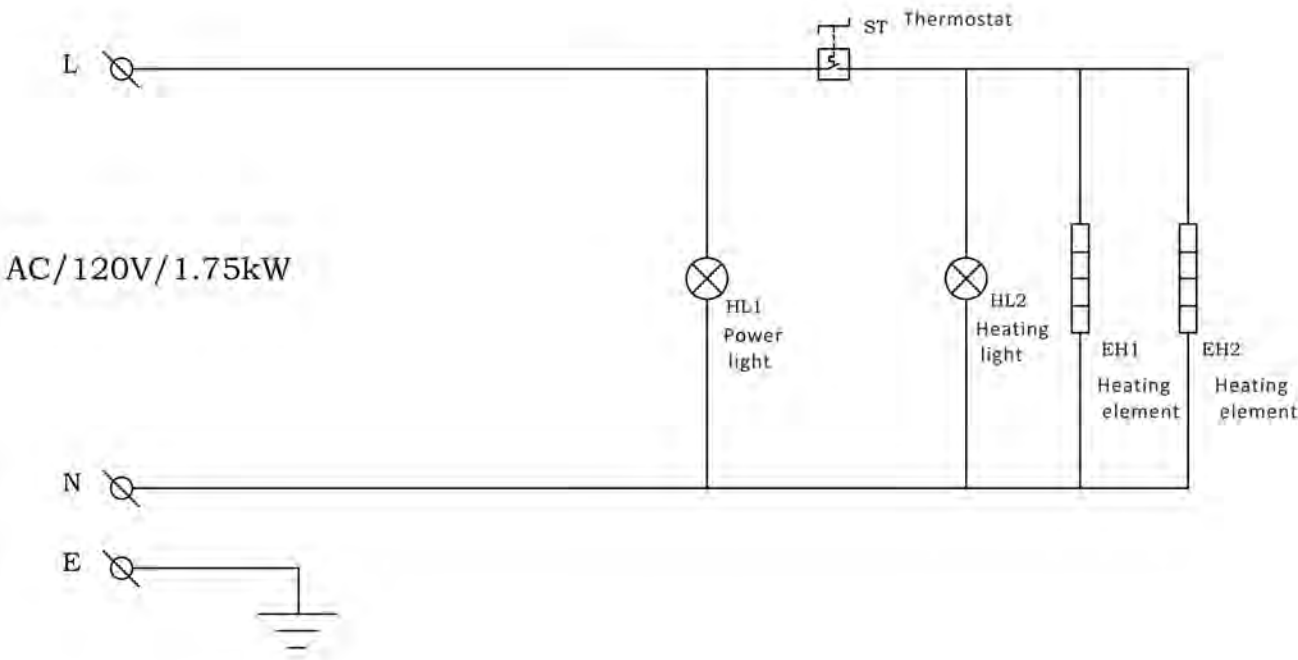
Problem	Possible Causes	Action
1. Grill plates do not heat even though power indicators are lit.	1. Defective controller. 2. Defective heater(s).	1. Replace controller 2. Replace heater(s).
2. Temperature cannot be controlled.	1. Defective temperature controller.	1. Replace temperature controller
3. Heating indicator appears normal, but power indicators are not lit.	1. Defective power indicator(s)	1. Replace power indicator(s)

Grill SG-811EB

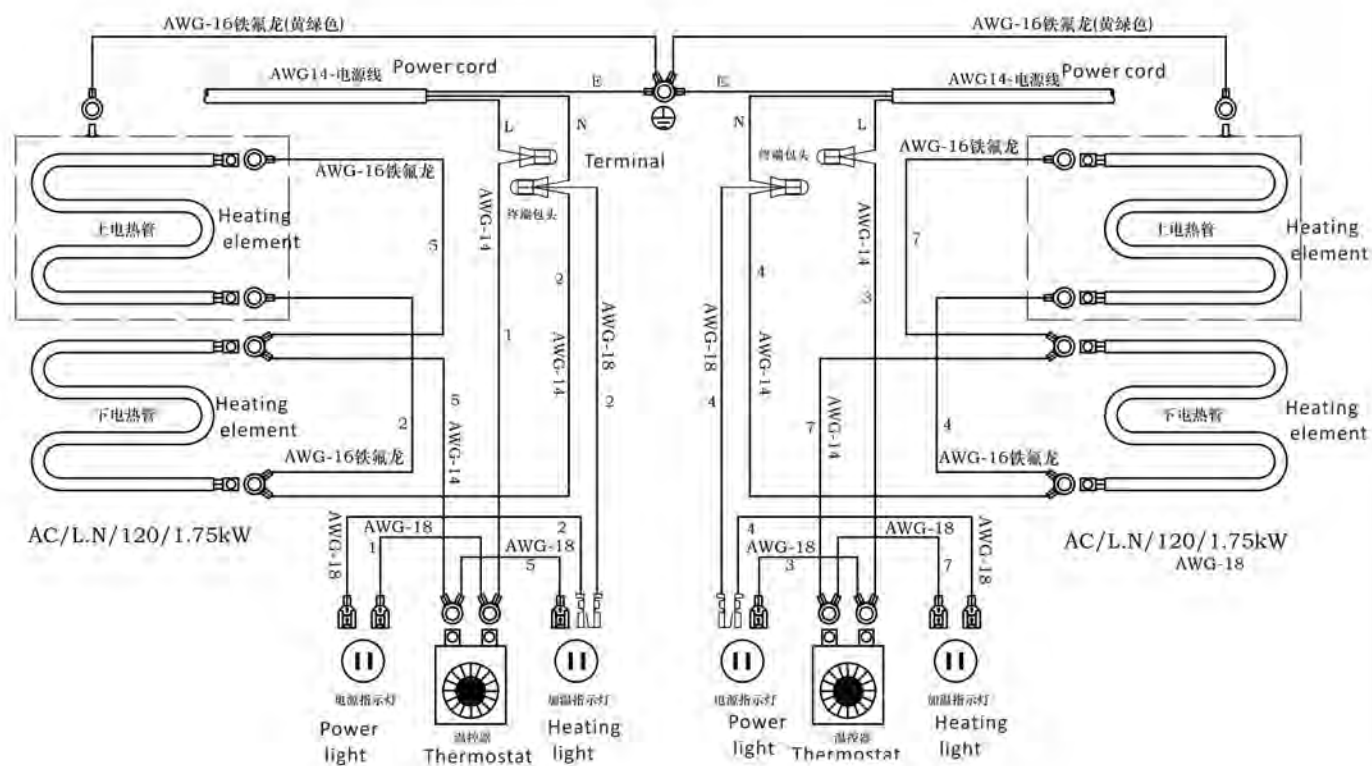
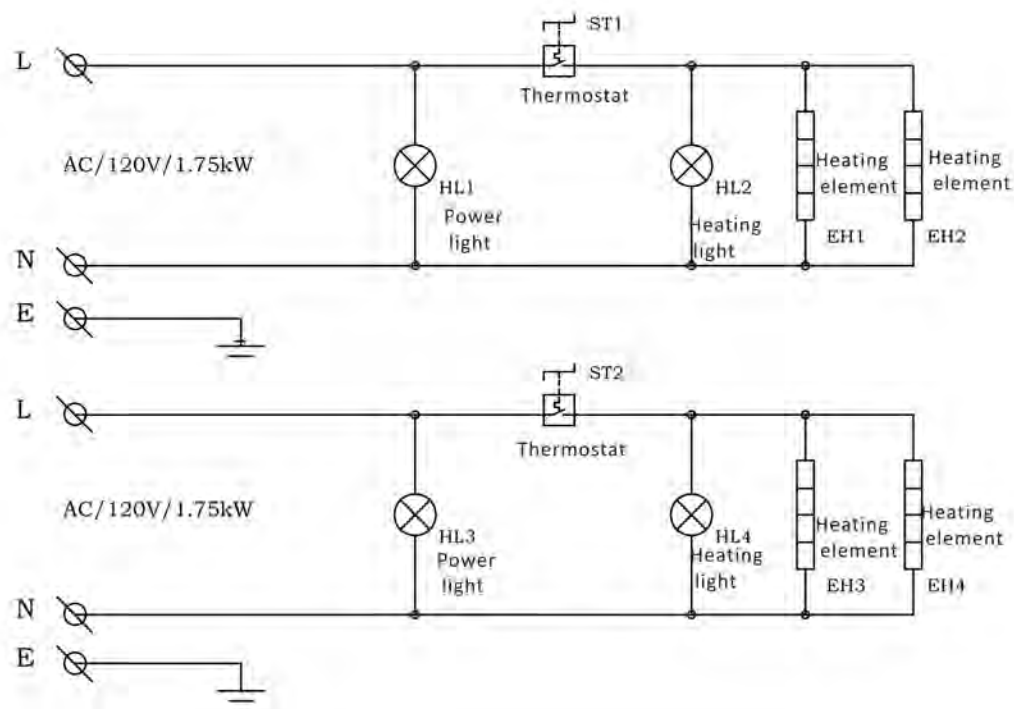
Circuit diagram



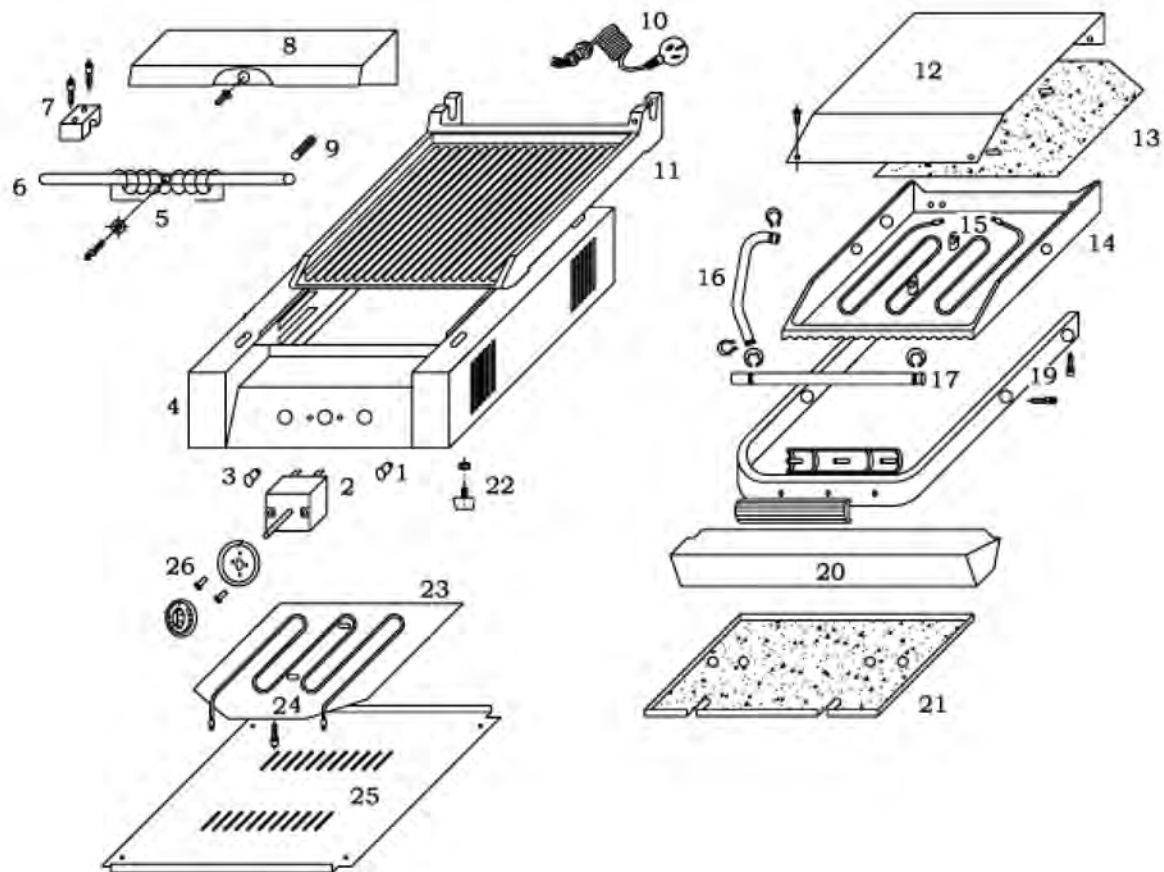
Grill SG-811B
Circuit diagram



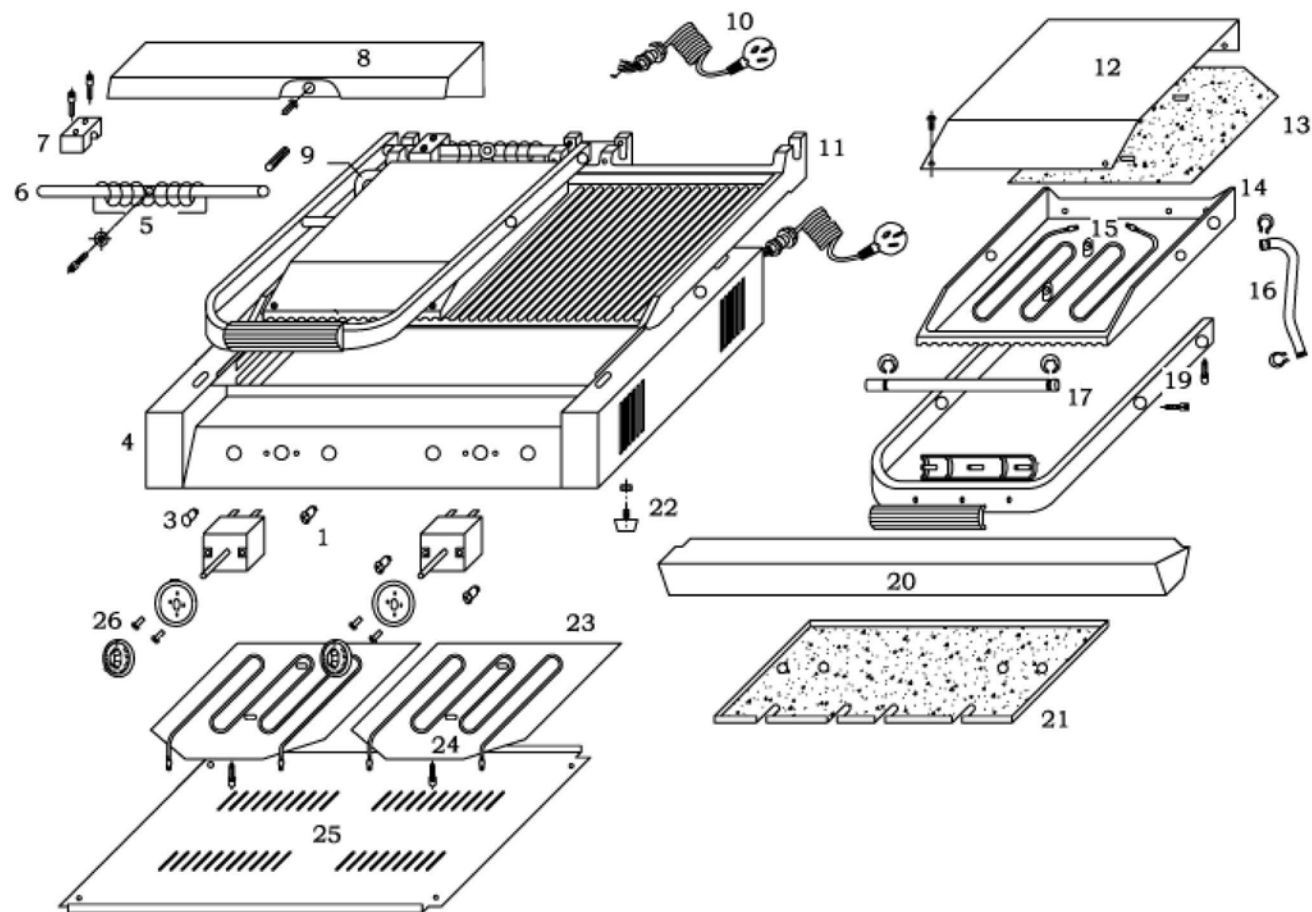
Grill SG-813B Circuit diagram



SG-811
SG-811E



SG-813



VER811

Sandwich Grills - SG-811, SG-811/F, SG-811E, SG-811E/F, SG-813

Reference Number	SG-811 and SG-811/F Part Number	SG-811E and SG-811E/F Part Number	SG-813 Part Number	Description
1	DF6SG-1	DF6SG-1	DF6SG-1	Heat Indicator - Orange
2	TH-1201	TH-1201	TH-1201	Thermostat Regulator
3	DF6SG-3	DF6SG-3	DF6SG-3	Power Indicator - Green
4				Body
5	SG-5	SG-5	SG-5	Torsional Spring w/Screws
6	SG-6	SG1E-6	SG-6	Back Axis
7	SG-7	SG-7	SG-7	Adjustable Tension Base w/Screw
8	SG1-8	SG1E-8	SG3-8	Axis Cover
9	SG-9	SG-9	SG-9	Axis Holding Pin
10	SG-10	SG-10	SG-10	Power Supply Cord
11				Bottom Plate - Cast Iron
12				Top Plate Cover w/ Screws
13				Upper Mounting Plate
14				Top Plate - Cast Iron
15	SG-15	SG1E-15	SG-15	Upper Heating Element
16	SG-16	SG-16	SG-16	Wire Tube
17	SG-17	SG1E-17	SG-17	Upper Axis w/Clips
19	SG-19	SG1E-19	SG-19	Handle Frame with Grip
20	SG1-20	SG1E-20	SG3-20	Oil Collector
21				Lower Mounting Plate
22	SG-22	SG-22	SG-22	Rubber Foot
23				Element Plate
24	SG-24	SG1E-24	SG-24	Bottom Heating Element
25				Bottom Cover w/Screws
26	SG-26	SG-26	SG-26	Thermostat Knob
27	SG-27	SG-27	SG-27	Screw for Back Axis/Handle

ACE Electrical Equipment One Year Warranty

ACE warrants its equipment against defects in materials and workmanship, subject to the following conditions: This warranty applies to the original owner only, and is not assignable.

ACE Electrical Equipment is warranted for one year, effective from the date of purchase by the original owner. A copy of the original receipt or other proof of purchase is required to obtain warranty coverage.

Should any product fail to function in its intended manner under normal use within the limits defined in this warranty, at ACE's discretion, such product will be repaired, replaced with a refurbished unit, or replaced with a new unit by ACE, after defective unit has been inspected and defect has been confirmed. ACE does not assume any liability for extended delays in replacing any item beyond its control. This warranty does not apply to rubber and non-metallic synthetic parts where usage, wear, or lack of preventative maintenance may create abnormal replacement rates, and these parts are excluded from this limited warranty.

This warranty covers products shipped into the 48 contiguous United States, Hawaii, and metropolitan areas of Alaska and Canada. Warranty coverage on products used outside the 48 contiguous United States, Hawaii and metropolitan areas of Alaska and Canada may vary. Contact ACE for details at 1-800-223-7750

The following conditions are not covered by warranty:

- Equipment failure relating to improper installation, improper utility connection or supply and problems due to improper ventilation.
- Equipment that has not properly been maintained, damage for improper cleaning, and water damage to controls.
- Equipment that has not been used in an appropriate manner, or has been subject to misuse, neglect, abuse, accident, alteration, negligence, damage during transit, delivery or installation, fire, flood, riot, or act of God.
- Equipment that has the model number or serial number removed or altered.
- Equipment on which the security seal has been broken.

If the equipment has been changed, altered, modified, or repaired without express written permission from ACE, then the manufacturer shall not be liable for any damages to any person or to any property, which may result from the use of this equipment thereafter.

This equipment is intended for commercial use only. Warranty is void if equipment is used in other than a commercial application.

In the event your repair is not covered under the stated warranty provisions, parts are available by calling 1-800-223-7750. Equipment not covered by repair should be picked up from our warehouse facility within 10 business days from notification date. Any and all arrangements and expenses for the return of this merchandise is your responsibility.

“THE FOREGOING WARRANTY IS IN LIEU OF ANY AND ALL WARRANTIES EXPRESSED OR IMPLIED INCLUDING ANY IMPLIED WARRANTY OF MERCHANTABILITY OR FITNESS FOR PARTICULAR PURPOSES AND CONSTITUTES THE ENTIRE LIABILITY OF ACE. IN NO EVENT DOES THE LIMITED WARRANTY EXTEND BEYOND THE TERMS STATED HEREIN.”

VER40111