



## SK-600 Soup Kettle

**This manual contains important information regarding your *Admiral Craft* unit. Please read this manual thoroughly prior to equipment set-up, operation and maintenance. Failure to comply with regular maintenance guidelines outlined in this manual may void the warranty. MUST READ!!!**

## WARNINGS

- Do not touch any hot surfaces
- Do not immerse unit, cord or plug in liquid at any time
- Do not plug or unplug unit with wet hands
- Do not operate kettle while it is empty
- Do not move or carry unit when it is on or containing hot food
- Always keep the removable hinged lid attached and in the closed position when *not* serving
- Do not substitute the aluminum container provided
- Do not fill kettle over 9 liters or beyond the limit marked “Max”
- If foam or liquid overflows from the unit, switch off immediately
- Do not put the unit or s/s container in refrigerator or freezer
- Unplug cord from outlet when not in use and before cleaning
- Plug only into a 3-hole grounded electrical outlet
- Do not operate unattended
- Do not use this unit for anything other than intended use
- Do not use outdoors
- Keep children and animals away from unit
- Always operate on a firm, dry and level surface at least 12” from walls or any other obstruction
- Do not use if unit has a damaged cord or plug, in the event the appliance malfunctions, or has been damaged in any manner
- Any incorrect installation, alterations, adjustments and/or improper maintenance can lead to property loss and injury. All repairs should be done by authorized professionals only
- Ensure that the designated power supply is adequate for continual usage and the voltage is correct
- Do not clean with water jet

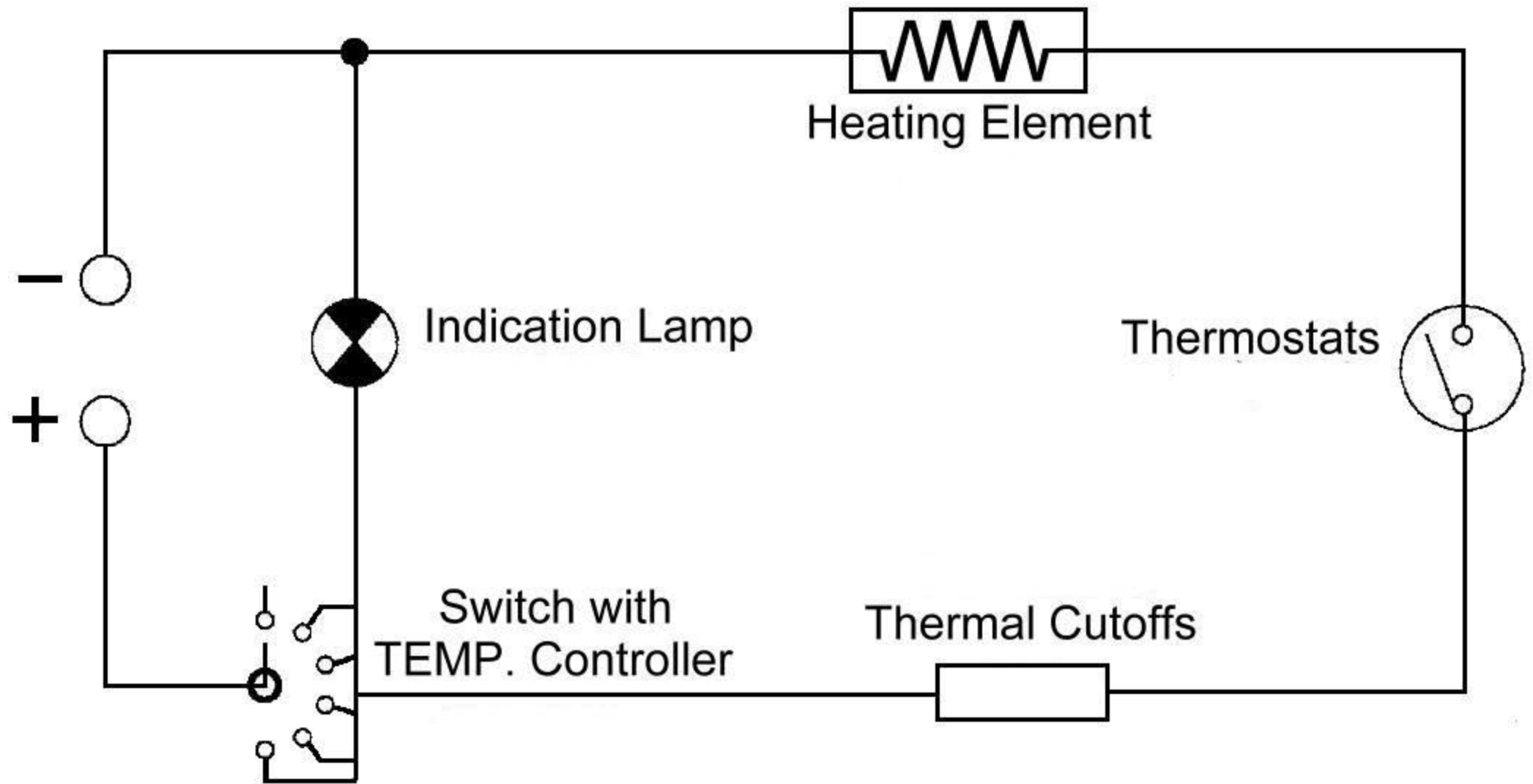
## TO USE

1. Plug the power cord into the appropriately rated outlet.
2. Add 0.6L of water between the stainless steel liner and internal aluminum container. NEVER over-fill with water. The stainless steel liner should NEVER float up, even when empty. Remove excess water immediately.
3. Default setting is between 8 and 12 for initial heat up.
4. The temperature control should be set between 1 and 8. Always operate the kettle at the lowest setting possible to maintain correct serving temperature.

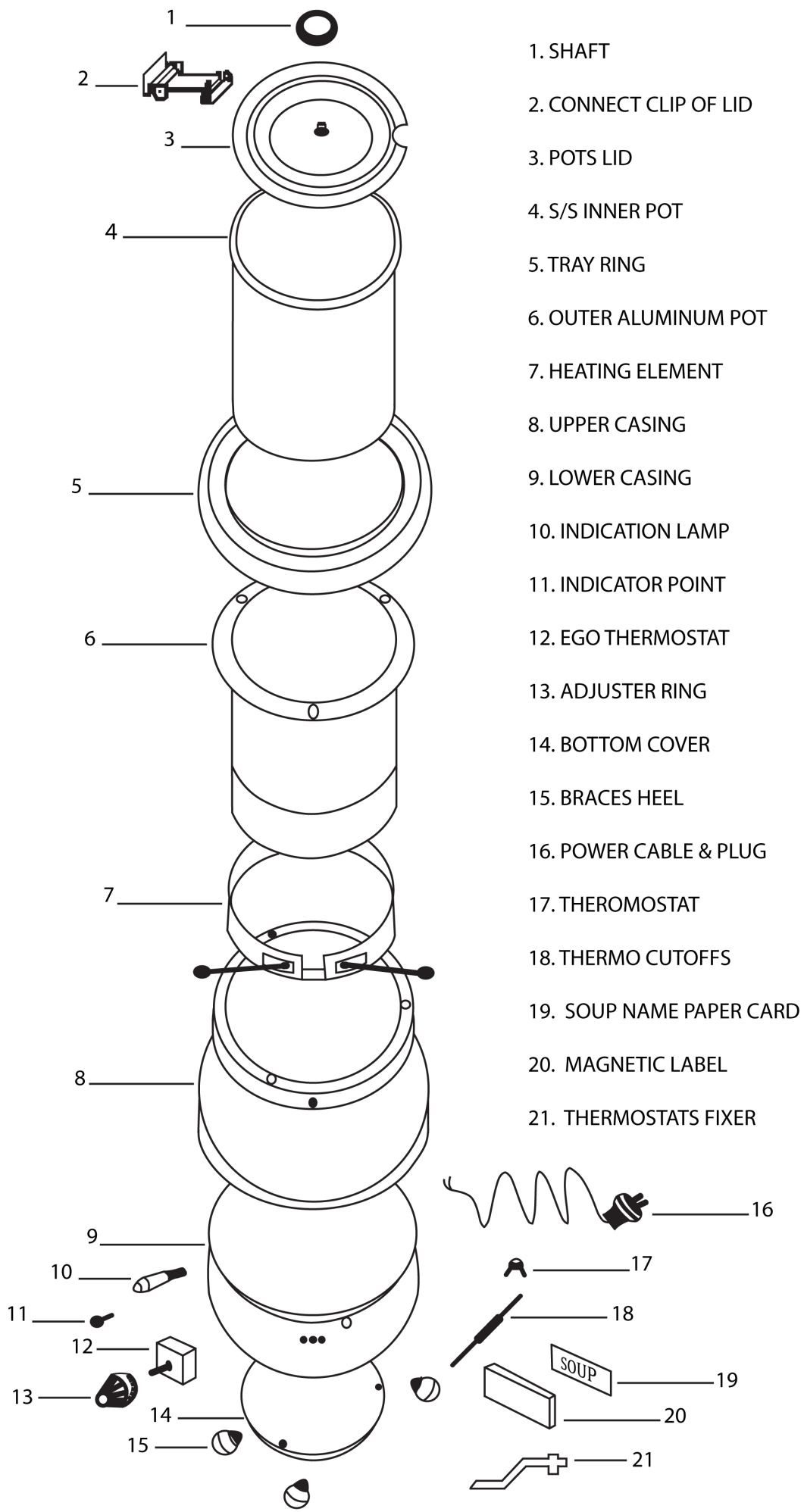
**CLEANING – NOTE:** To maintain cleanliness and increase service life, the soup kettle should be cleaned daily. Do not immerse the unit in water or any other liquid. If liquid enters the electrical compartment it may cause a short circuit or electrical shock.

1. Before cleaning or attempting to move, allow unit to cool down completely then unplug from outlet.
2. Spilled food should be removed immediately from all exterior surfaces.
3. The aluminum container, stainless steel liner and lid are machine washable.
4. The exterior and top collar should be wiped over with a damp, soapy cloth.
5. To avoid damage, do not use abrasive cleaners or scouring pads.
6. If soap or chemical cleaners are used, be sure they are completely rinsed away with clear water immediately after cleaning. Chemical residue could damage or corrode the surfaces of the unit.

SK-600



# SK-600



## Soup Kettle - SK-600

Reference Number	SK-600 Part Number	Description
1	SK-1	Lid w/Handle
2	SK-2	Hinged Clip for Lid
4	SK-4	S/S Inner Pot
5		Tray Ring
6		Outer Aluminum Pot
7	SK-7	Heating Element
8		Upper Casing
9		Lower Casing
10	SK-10	Indication Lamp
11	SK-11	Indicator Point
12	SK-12	EGO Thermostat
13	SK-13	Temperature Knob
14		Bottom Cover
15		Feet
16	SK-16	Power Cord
17	SK-17	Thermostat
18	SK-18	Thermal Cutoffs
19		Magnetic Label
20		Thermostats Fixer
23		Paper Card

## **ACE Equipment One Year Limited Warranty**

*Admiral Craft Equipment Corp. (ACE) warrants its equipment against defects in materials and workmanship, subject to the following conditions:*

ACE Equipment is warranted for one year, effective from the date of purchase by the original owner. A copy of the original receipt or other proof of purchase is required to obtain warranty coverage. This warranty applies to the original owner only, and is not assignable.

Should any product fail to function in its intended manner under normal use within the limits defined in this warranty, at ACE's discretion, such product will be repaired, replaced with a refurbished unit, or replaced with a new unit by ACE, after defective unit has been inspected and defect has been confirmed. ACE does not assume any liability for extended delays in replacing any item beyond its control. This warranty does not apply to rubber and non-metallic synthetic parts that may need to be replaced due to normal usage, wear or lack of preventative maintenance.

This warranty covers products shipped into the 48 contiguous United States, Hawaii, and metropolitan areas of Alaska and Canada. Warranty coverage on products used outside the 48 contiguous United States, Hawaii and metropolitan areas of Alaska and Canada may vary. Contact ACE for details at 1-800-223-7750

The following conditions are not covered by warranty:

- Equipment failure relating to improper installation, improper utility connection or supply and problems due to improper ventilation.
- Equipment that has not properly been maintained, damage from improper cleaning, and water damage to controls.
- Equipment that has not been used in an appropriate manner, or has been subject to misuse, neglect, abuse, accident, alteration, negligence, damage during transit, delivery or installation, fire, flood, riot, or act of God.
- Equipment that has the model number or serial number removed or altered.
- Equipment on which the security seal has been broken.

If the equipment has been changed, altered, modified, or repaired without express written permission from ACE, then the manufacturer shall not be liable for any damages to any person or to any property, which may result from the use of this equipment thereafter.

This equipment is intended for commercial use only and this warranty is void if equipment is used in other than a commercial application.

For warranty and non-warranty related issues please call ACE at 1-800-223-7750 ext 3 to speak to technical support. When calling please have your model number, serial number and proof of purchase ready. To purchase replacement parts, receive online technical support or fill out a warranty claim visit [www.admiralcraftequipment.com](http://www.admiralcraftequipment.com). It is not necessary to contact the place where you originally purchased your product from.

**"THE FOREGOING WARRANTY IS IN LIEU OF ANY AND ALL WARRANTIES EXPRESSED OR IMPLIED INCLUDING ANY IMPLIED WARRANTY OF MERCHANTABILITY OR FITNESS FOR PARTICULAR PURPOSES AND CONSTITUTES THE ENTIRE LIABILITY OF ACE. IN NO EVENT DOES THE LIMITED WARRANTY EXTEND BEYOND THE TERMS STATED HEREIN."**